

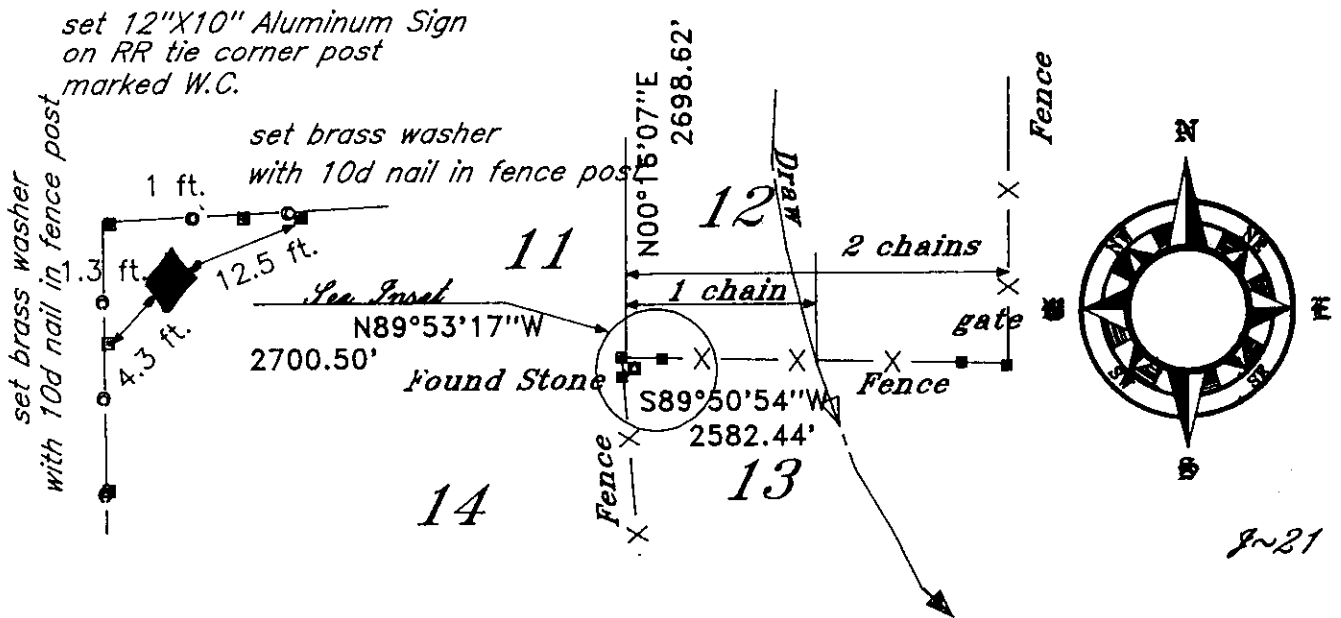
State of Wyoming Corner Record

(In compliance with the *CORNER PERPETUATION AND FILING ACT*, Wyoming Statutes, 1977, Section 36-11-101, et, seq., and the Rules and Regulations of the Board of Registration for Professional Engineers and Professional Land Surveyors)

Reverse side of this form may be used if more space is needed.

Record of original survey and citation of source of historical information (if corner is lost or obliterated). Description of corner monumentation evidence found and/or monument and accessories established to perpetuate the location of this corner. Sketch of relative location of monument, accessories, and reference points with course and distance to adjacent corner(s) (if determined in this survey). Method and rationale for reestablishment of lost or obliterated corner.

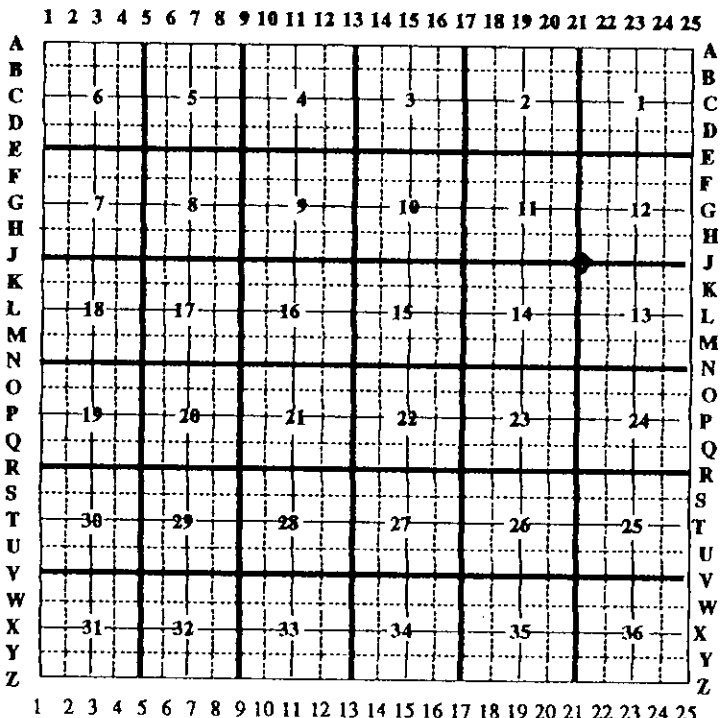
GLO: North between section 13 & 14, @ 80 chains set 23"X20"X14" conglomerate for corner 12,11,13 & 14
 Found 20"X14"X12" Granite boulder set in fence corner as shown hereon.



Date of Field Work: _____ Office Reference: _____

CROSS INDEX DIAGRAM

Firm/Agency, Address



Terrestrial Surveying & Mapping
 P. O. Box 82
 Cheyenne, WY 82003
 Telephone Number: 307 634-9360

'96 NOV 1 PM 3 57
 LARAMIE COUNTY CLERK
 CHEYENNE, WY.
192662

This corner record was prepared by me or under my direction and supervision.
 SEAL & SIGNATURE

Larry T. Bennett
 1 Nov 96

Sec. COR. 11 12
 Corner Name: 14 13 Section: T12N R66W P.M. Cross-Index No.: 21